

FIBER PANELS

- Loaded with multi-mode bulkhead.
- Single-mode panels are available upon request.

19" RACK MOUNT PANEL LOADED WITH DUPLEX ST BULKHEAD

ORDER CODE	# OF PORT	HEIGHT	1-9	10-19	20+
891-DST-12-L	12	1 3/4"	\$68.64	65.52	60.84
891-DST-16-L	16	1 3/4"	86.24	82.32	76.44
891-DST-24-L	24	1 3/4"	121.44	115.92	107.64
891-DST-32-L	32	3 1/2"	158.40	151.20	140.40
891-DST-48-L	48	3 1/2"	228.80	218.40	202.80



19" RACK MOUNT PANEL LOADED WITH SIMPLEX ST BULKHEAD

ORDER CODE	# OF ST	HEIGHT	1-9	10-19	20+
891-ST-12-L	12	1 3/4"	\$47.52	45.36	42.12
891-ST-16-L	16	1 3/4"	58.08	55.44	51.48
891-ST-24-L	24	3 1/2"	79.20	75.60	70.20
891-ST-32-L	32	3 1/2"	102.08	97.44	90.48



19" RACK MOUNT PANEL LOADED WITH DUAL SC BULKHEAD

ORDER CODE	# OF DUAL SC	HEIGHT	1-9	10-19	20+
891-DSC-12-L	12	1 3/4"	\$68.64	65.52	60.84
891-DSC-16-L	16	1 3/4"	86.24	82.32	76.44
891-DSC-24-L	24	1 3/4"	121.44	115.92	107.64
891-DSC-32-L	32	3 1/2"	158.40	151.20	140.40
891-DSC-48-L	48	3 1/2"	228.80	218.40	202.80



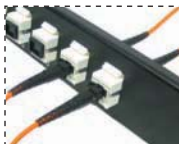
19" RACK MOUNT PANEL LOADED WITH DUPLEX LC BULKHEADS

ORDER CODE	# OF PORT	HEIGHT	1-9	10-19	20+
891-DLC-08-L	8	1 3/4"	\$52.80	50.40	46.80
891-DLC-12-L	12	1 3/4"	68.64	65.52	60.84
891-DLC-16-L	16	1 3/4"	86.24	82.32	76.44
891-DLC-24-L	24	3 1/2"	121.44	115.92	107.64
891-DLC-32-L	32	3 1/2"	158.40	151.20	140.40
891-DLC-48-L	48	5 1/4"	228.80	218.40	202.80



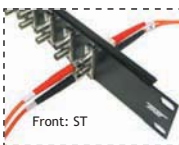
MTRJ 19" RACK MOUNT FEED THRU PANEL

ORDER CODE	# OF MTRJ	HEIGHT	1-9	10-19	20+
891-MTRJ-08-L	8	1 3/4"	\$41.17	39.30	36.49
891-MTRJ-12-L	12	1 3/4"	48.10	45.91	42.63
891-MTRJ-16-L	16	1 3/4"	58.08	55.44	51.48
891-MTRJ-24-L	24	3 1/2"	79.20	75.60	70.20
891-MTRJ-32-L	32	3 1/2"	102.08	97.44	90.48
891-MTRJ-48-L	48	5 1/4"	146.08	139.44	129.48



19" RACK MOUNT PANEL LOADED WITH DUPLEX ST TO SC ADAPTERS

ORDER CODE	# OF PORT	HEIGHT	1-9	10-19	20+
891-DST/DSC-12-L	12	1 3/4"	\$68.64	65.52	60.84
891-DST/DSC-16-L	16	1 3/4"	86.24	82.32	76.44
891-DST/DSC-24-L	24	1 3/4"	121.44	115.92	107.64
891-DST/DSC-32-L	32	3 1/2"	158.40	151.20	140.40
891-DST/DSC-48-L	48	3 1/2"	228.80	218.40	202.80



ACCESSORIES

ST, SC, LC, MTRJ FEMALE / FEMALE BULKHEAD COUPLING / ADAPTER

- Free-hanging connection or panel feed-through mountable.
- High precision mating structure and low insertion loss.
- Dust cap included.



ORDER CODE	DESCRIPTION	1-49	50-99	100+
Multi-Mode Coupling				
890-ST-ST-M	Simplex Multi-Mode ST to ST Bulkhead Coupling	\$2.46	2.35	2.18
890-SC-SC-M	Simplex Multi-Mode SC to SC Bulkhead Coupling	2.46	2.35	2.18
890-DST-DST-M	Duplex Multi-Mode ST to ST Bulkhead Coupling	3.43	3.28	3.04
890-DSC-DSC-M	Duplex Multi-Mode SC to SC Bulkhead Coupling	3.43	3.28	3.04
890-DLC-DLC-M	Duplex Multi-Mode LC to LC Bulkhead Coupling	3.43	3.28	3.04
890-MTRJ-MTRJ-M	Multi-Mode MT-RJ to MT-RJ Mating Coupler, Panel Mountable	4.40	4.20	3.90
Multi-Mode Adapter				
890-ST-SC-M	Simplex ST to SC Multi-Mode Adapter	2.46	2.35	2.18
890-DST-DSC-M	Duplex ST to SC Multi-Mode Adapter	3.43	3.28	3.04
For Both Multi-Mode and Single-Mode				
890-ST-ST-S	Simplex ST to ST Bulkhead Coupling	4.93	4.70	4.37
890-SC-SC-S	Simplex SC to SC Bulkhead Coupling	3.70	3.53	3.28
890-DSC-DSC-S	Duplex SC to SC Bulkhead Coupling	6.86	6.55	6.08
890-DLC-DLC-S	Duplex LC to LC Bulkhead Coupling	6.86	6.55	6.08

FIBER OPTIC LOOPBACK CABLES

- Provides a looped (circular) signal from source device to hardware for testing purposes, enabling a signal check for both transmit and receiving function.
- Available in SC, LC, MTRJ types, Multi-Mode or Single-Mode.
- Multimode cable in 62.5/125µ, 50/125µ, or 10G 50/125µ.
- Cable Length: 3 inches.



ORDER CODE	DESCRIPTION	1-24	25-49	50+
800-LP-SC-M50	Multi-Mode, 50/125, SC	\$13.20	12.60	11.70
800-LP-LC-M50	Multi-Mode, 50/125, LC	13.20	12.60	11.70
800-LP-MTRJ-50	Multi-Mode, 50/125, MTRJ	13.20	12.60	11.70
800-LP-SC-M62.5	Multi-Mode, 62.5/125, SC	13.20	12.60	11.70
800-LP-LC-M62.5	Multi-Mode, 62.5/125, LC	13.20	12.60	11.70
800-LP-MTRJ-62.5	Multi-Mode, 62.5/125, MTRJ	13.20	12.60	11.70
800-LP-SC-S	Single-Mode, SC	14.08	13.44	12.48
800-LP-LC-S	Single-Mode, LC	14.08	13.44	12.48
800-LP-MTRJ-S	Single-Mode, MTRJ	14.08	13.44	12.48
800G-LP-SC-M50	10Gigabit Multi-Mode, 50/125, SC	13.20	12.60	11.70
800G-LP-LC-M50	10Gigabit Multi-Mode, 50/125, LC	13.20	12.60	11.70
800G-LP-MTRJ-50	10Gigabit Multi-Mode, 50/125, MTRJ	13.20	12.60	11.70

DUST COVER FOR LC/SC COUPLER

- Protect fiber optic couplers from dust.
- Protect the un-used ports on the fiber optic patch panels.
- Unique hinge style design.
- For LC or SC couplers.
- Colors available in BLUE and IVORY.



ORDER CODE	DESCRIPTION	1-49	50-99	100+
895-DLC-SHUTTER-XX	Dust Cover for LC duplex coupler	\$0.53	0.50	0.47
895-DSC-SHUTTER-XX	Dust Cover for SC duplex coupler	0.53	0.50	0.47

XX = Color BL IV