

PATCH PANELS & FEED-THRU PANELS

CAT5E RJ-45, 110-TYPE PATCH PANEL

- ETL/UL Cat5E verified; UL 1863.
- Exceeds EIA/TIA TSB 40A connecting hardware specification.
- Space saving, high density 19" panel design.
- PCB type 110 termination.
- Color icons attachable and included.



ORDER CODE	# PORTS	WIRING	HEIGHT	1-4	5-9	10+
01B-812-0-88-258A	12	258A (568B)	1.75"	\$44.00	42.00	39.00
01B-812-0-88-568A	12	568A	1.75"	44.00	42.00	39.00
01B-816-0-88-258A	16	258A (568B)	1.75"	54.56	52.08	48.36
01B-816-0-88-568A	16	568A	1.75"	54.56	52.08	48.36
01B-824-0-88-258A	24	258A (568B)	1.75"	63.36	60.48	56.16
01B-824-0-88-568A	24	568A	1.75"	63.36	60.48	56.16
01B-832-0-88-258A	32	258A (568B)	3.50"	121.44	115.92	107.64
01B-832-0-88-568A	32	568A	3.50"	121.44	115.92	107.64
01B-848-0-88-258A	48	258A (568B)	3.50"	130.24	124.32	115.44
01B-848-0-88-568A	48	568A	3.50"	130.24	124.32	115.44
01B-864-0-88-258A	64	258A (568B)	7"	269.28	257.04	238.68
01B-864-0-88-568A	64	568A	7"	269.28	257.04	238.68

CAT5E, 89D BRACKET TYPE 110 PANEL, 12-PORT

- 89D Type bracket, surface mountable.
- For small voice and data connections.
- Color icons attachable design.



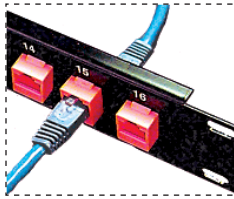
ORDER CODE	WIRING	1-9	10-19	20+
01C-812-258A	258A Wiring	\$45.76	43.68	40.56
01C-812-568A	568A Wiring	45.76	43.68	40.56



CAT5E RJ-45 FEED-THROUGH PANEL

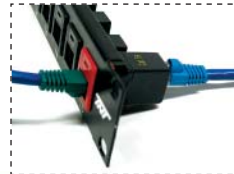
- 19" panel, loaded with Cat5E in-line couplers.

ORDER CODE	# PORTS	HEIGHT	1-4	5-9	10+
01E-08	8	1.75"	\$73.92	70.56	65.52
01E-12	12	1.75"	96.80	92.40	85.80
01E-16	16	1.75"	119.68	114.24	106.08
01E-24	24	3.50"	168.96	161.28	149.76
01E-32	32	3.50"	205.92	196.56	182.52
01E-48	48	5.25"	306.24	292.32	271.44



CAT5E, RJ-45 FEED THROUGH PANEL

- 19" wide black color, 1/16" thick steel panel.
- Clear white silk screen number on the panel.
- Cat5E, RJ-45 in-line coupler snapped on to the panel.
- Black color bezels hold the coupler flush with the front panel.



ORDER CODE	# OF PORTS	RACK SPACE #	HEIGHT	1-4	5-9	10+
015-008-RJ45	8	1	1.75"	\$73.92	70.56	65.52
015-012-RJ45	12	1	1.75"	98.56	94.08	87.36
015-016-RJ45	16	1	1.75"	123.20	117.60	109.20
015-024-RJ45	24	2	3.50"	176.00	168.00	156.00
015-032-RJ45	32	2	3.50"	220.00	210.00	195.00
015-048-RJ45	48	3	5.25"	308.00	294.00	273.00

1U (1 3/4") & 2U (3 1/2") HIGH DENSITY 24 / 48-PORT FEED-THRU PANEL

- 19" wide black color, 1/8" thick steel panel.
- Clear white silk screen number on the panel.
- Mini couplers can be loaded: RJ-12, RJ-45, Cat5E, Cat6.



ORDER CODE	DESCRIPTION	1-4	5-9	10+
016-024-B	1U 24-Port Blank Panel (Flush Type)	\$35.20	33.60	31.20
016-048-B	2U 48-Port Blank Panel (Flush Type)	49.28	47.04	43.68
016-024-C5E	1U 24-Port Panel - Cat5E Couplers Loaded	174.24	166.32	154.44
016-048-C5E	2U 48-Port Panel - Cat5E Couplers Loaded	308.00	294.00	273.00

KEYSTONE JACKS

90° & 180° MINI KEYSTONE JACKS

- Compliant with EIA / TIA specifications.
- Dual color-coded labels for 568A and 568B wiring schemes.
- Uniquely patented PCB (Printed Circuit Board) design.
- Snap-in type enclosure allows easy mounting onto wall plates or panels.
- Compact style, fits into 016-024 / 016-048 panels.

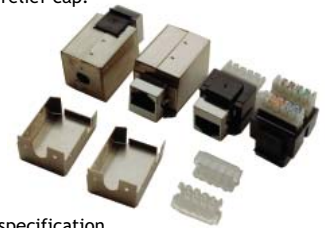


ORDER CODE	DESCRIPTION	1-49	50-99	100+
07B-166-YY-M	RJ-12 180° Mini Keystone Jack	\$2.11	2.02	1.87
07F-166-YY-M	RJ-12 90° Mini Keystone Jack	1.94	1.85	1.72
07B-188-YY-M	Cat5E 180° Mini Keystone Jack	2.64	2.52	2.34
07F-188-YY-M	Cat5E 90° Mini Keystone Jack	2.46	2.35	2.18



CAT5E SHIELDED KEYSTONE JACKS

- True 110-Type IDC termination with strain-relief cap.
- Two-piece snap-on type metal enclosure provides 100% shielding.
- Unique cable entry holder to fit with different cable OD.
- Metal enclosure connects to pin in the 110 connector to provide drain wire direct connection.
- 50µ" gold plating on jack contacts - meet all FCC part 68 specification.
- UL Verified Cat5E - meet EIA/TIA TSB-40A specification.



ORDER CODE	DESCRIPTION	1-49	50-99	100+
07E-188-BK	CAT5E, 8P8C RJ-45	\$3.87	3.70	3.43
07E-188-BK-W	CAT5E, 8P8C RJ-45, without Metal Enclosure	3.43	3.28	3.04

5-PAIR 110 PUNCH DOWN TOOL

- Reduce 110-type LAN and telecommunication distribution system installation time.
- Used on both cable and cross-connect sides of 110-type termination block.
- Terminates and cuts up to five pairs of UTP at the same time.
- Rubber handle design provides comfortable use.
- Features reversible blades for seating conductors without cutting.



ORDER CODE	1-9	10-19	20+
061-315DR	\$80.96	77.28	71.76

ROUND CABLE STRIPPER / 110 INSERTION TOOL

- Ideal for stripping off the outside jacket of the round 1-4 pair UTP cable.
- Built-in 110 insertion tool on one end.



ORDER CODE	1-9	10-19	20+
061-ST	\$1.67	1.60	1.48

CATEGORY 5E TOOL-LESS KEYSTONE JACK

- IDC type terminal with built-in strain-relief cap.
- Dual environment compatible: 568A and 568B.



ORDER CODE	1-49	50-99	100+
07K-188-YY	\$2.29	2.18	2.03



CAT3 IDC-TYPE KEYSTONE JACK

- Insulation Displacement Contact (IDC) terminal for tool-less termination.
- Color-coded strain-relief cap for easy wire arrangement.



ORDER CODE	CAT	JACK	WIRING	1-49	50-99	100+
07C-188-XX	3	RJ-45	258A	\$1.14	1.09	1.01
07C-166-XX	3	RJ-12	USOC	1.14	1.09	1.01



SURFACE BOX FOR TOOL-LESS KEYSTONE JACK (07K SERIES)

ORDER CODE	DESCRIPTION	1-49	50-99	100+
07K-SBX-1-XX	Single Port	\$1.14	1.09	1.01
07K-SBX-2-XX	Dual Ports	1.27	1.21	1.12



\*\* ALL PRODUCTS ABOVE ARE LUCENT NIE EXEMPTION TYPE \*\*

\*\* RoHS ARE AVAILABLE UPON REQUEST \*\*